



PROVIDED PHOTO

Eve Jacobs-Carnahan: "Shorebird Peril"

VISUAL ART REVIEW

# 'Surface Expressions'

## Explorations in fiber art

By VICTORIA CRAIN  
ARTS CORRESPONDENT

Walk into the Chaffee Art Center right now and

the various works of art will beckon your hands to reach out and touch. The current exhibit, "Surface Expressions," is a broad and pleasing exhibit of fiber art. A juried group show, it includes the work of 14 of the 20 Vermont members of the Surface Design Association.

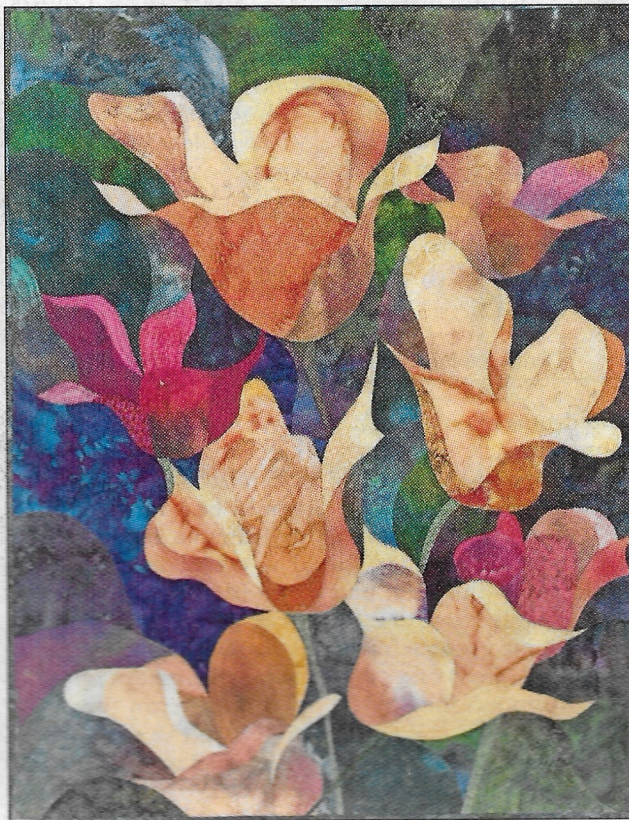
■ CHAFFEE ART CENTER

The Chaffee Art Center presents "Surface Expressions," fiber art from 14 members of the Vermont Chapter of the Surface Design Association, through Dec. 9, in its galleries, 16 S. Main St. in Rutland. Hours are: 11 a.m. to 5 p.m. Wednesday-Friday; 11 a.m. to 3 p.m. Saturday (closed Nov. 24); call 802-775-0356, or go online to [www.chaffeecenter.org](http://www.chaffeecenter.org). A public artists' reception will be held 5 to 7 p.m. Friday, Nov. 18.

and intriguing that it had me wishing I could look at the wrong side of many of the pieces. It is close to my heart because I work

with needle and canvas myself, and people often ask me to let them look at the back of the work.

At the Chaffee, you will see a wide range of works which transform fiber to fabric to object, using the comely tools of fiber work: the needle, the loom, the sewing machine, the well-managed hand.



PROVIDED PHOTO

This collection of fine handwork is so textural

# Fiber

Continued from Page B1

Works include a knitted color block panel; woven hangings; quilted pieces; finely made garments; a fanciful, small installation; and sculpture.

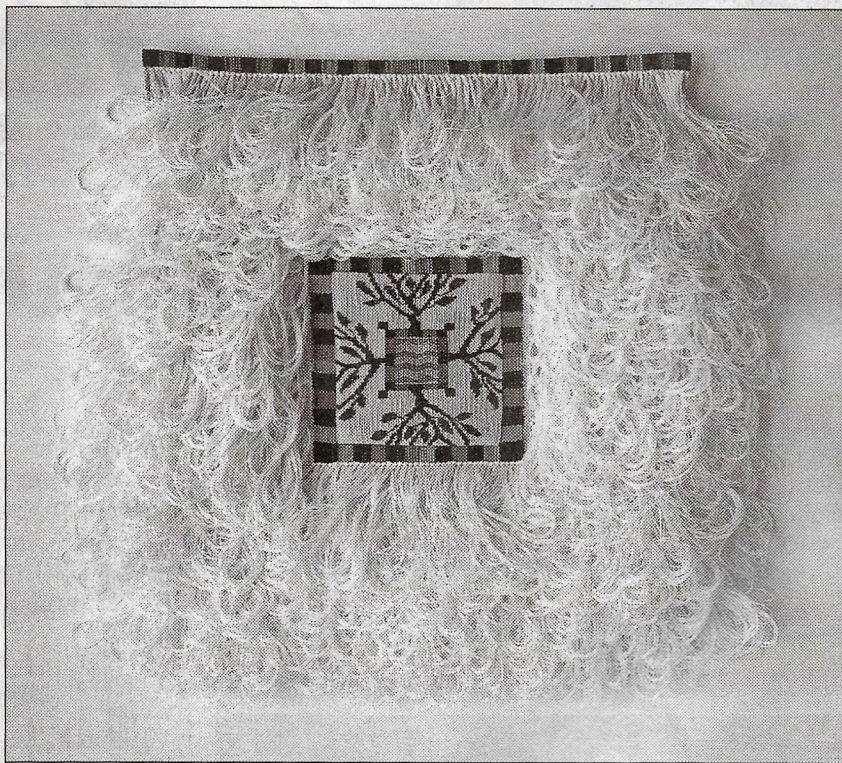
Linda Finklestein provides a number of wall collages. In these pieces she used mixed media including watercolor, found fabric, thread and stitching. Further, she employed a technique called rusting that adds an aged patina to the thoughtful arrangements. They are quiet things.

Several of the contributing artists have added hand stitching to their pieces. For example, Elizabeth Fram presents "Ulysses' Wave," made with fine dyed fabric and stitched with silk and cotton thread. Like her other featured works here, this is an abstract view that will remind the viewer of something mysterious and precious, but just beyond recall.

Almuth Palinkas adds a number of ingenious pieces encompassing a broad scope of genres. She presents wall pieces of weaving using the Moorman technique and a small tapestry. But for my eye, the most pleasing piece is upstairs; it is named "Journeys." "Journeys" is composed with pieces of linen in terrific grades of blue covered with trails of colored thread, some dense, some strung out and thin: a perfect analogy for journeys, some that we make over and over again, and others that happen just once.

Betsy Wing submits several impressionistic woven landscape-like pieces, emphasizing deep color blends. The colors rise to the surface of her works and then blend back out, making way for other shades.

The quilted work is fine indeed.



PROVIDED PHOTO

## Almuth Palinkas: "4. Garden of Repose"

Rosalind Daniels provides hangings that are precise, angular and articulate. Her use of color and pattern is striking and abstract: quilting for a new century. Marilyn Gillis' "Reflections from a Blue Moon" is kind of a color meditation on moonshine over watery surface. And Marya Lowe gives the rooms her bright, playful, angled abstract quilts.

The artists here all belong to the Surface Design Association, which is an international organization focused on inspiring creativity, encouraging innovation, and advocating for artistic excellence as the global leader in textile-inspired art and design. Its mission is to promote awareness and appreciation

of textile-inspired art and design through publications, exhibitions and conferences.

This writing doesn't mention all the participants, so the public will need to attend the exhibit to find all the treasures. The artists' reception will be 5 to 7 p.m. Friday. Give yourself a treat and go see the work. Creativity abounds, and that is cause for celebration.

Participating artists are: Judy Dales, Rosalind Daniels, Linda Finkelstein, Elizabeth Fram, Marilyn Gillis, Eve Jacobs-Carnahan, Ruby Leslie, Marya Lowe, Almuth Palinkas, Kathryn Price, Janet Ressler, Leslie Roth, Sharon Webster and Betsy Wing.